

The Drax Power (Generating Stations) Order

Land at, and in the vicinity of, Drax Power Station, near Selby, North Yorkshire

Consultation Report

Appendix 32 - Additional Engagement



The Planning Act 2008 – Section 37(3)(c)
The Infrastructure Planning (Applications: Prescribed Forms and Procedure)
Regulations 2009 – Regulation 5(2)(q)

Drax Power Limited

Drax Repower Project

Applicant: DRAX POWER LIMITED
Date: May 2018
Document Ref: 5.1.32
PINS Ref: EN010091

Contents

32.1 Drax Parish Council Liaison Group Minutes (25 October 2017)	1
32.2 Drax Parish Council Liaison Group Minutes (12 February 2018)	5
32.3 Invitations to political, environmental, economic and community stakeholder groups and organisations (8 January 2018)	10
32.4 Invitations to political, environmental, economic and community stakeholder groups and organisations (7 February 2018)	12
32.5 Presentation made a meeting with Selby District Council (30 January 2018)	13

32.1 Drax Parish Council Liaison Group Minutes (25 October 2017)

PARISH COUNCILLORS MEETING

October 25, 2017



PARISH COUNCILLORS MEETING

25th October 2017

Attendees:

Matt Willey – Drax
Graham Backhouse - Drax
Jan Strelczenie (Hemingbrough)
Roger Turnbull (Long Drax)
Malcolm Boatman (Goole Town)
Mike Jordan (Selby District Council, Carlton, Camblesforth & County Councillor, Selby South)
David Perry – (Drax Parish Council)
Michelle Thorpe (Clerk to Long Drax and Newland Parish councils)
Dave Peart (Selby District Councillor, Carlton and Camblesforth)
Stephen Greenwood (Newland Parish Council)
Neil Bull, (Camblesforth PC)

Notes:

Matt Willey opened the meeting apologising for the confusion in the arrangements, this had been caused by the absence of Rachael recently. Matt assured those attending that arrangements will be put in place prior to the next scheduled meeting.

Matt gave a brief overview of the company strategy, the rationale behind the acquisition of Opus, the opportunities emerging in the ancillary services market and how our plans for OCGTs and the repowering relate to those opportunities. He also raised the sale of Billington Bioenergy and the recent appointment of Will Gardiner as Chief Executive.

Graham presented the Repower slides to the meeting taking questions as the presentation progressed.

Initial discussion focussed on the changing aspect of the power market and the need for plants such as the ones proposed by Drax to support the balancing of the system and to provide voltage control. This being driven by the closure of the traditional large combustion plants combined with the increase in renewable, but intermittent, generation from wind and solar. The batteries were also discussed with an outline of their purpose as part of the development explaining their giving rapid start up support delivering power to the grid when called upon whilst the gas plant was in the process of starting up. Steven Greenwood mentioned another battery application which has been put in for the wind farm on the land in Newland.

The discussion then moved to the project description and gas connection. Drax presented their intent to make use of existing site and infrastructure wherever possible, limiting the impact on the local area/environment.

The stack height was explained, with Drax indicating this was new information received that day. The stack height being up to 120m, was put into context by Drax as being just a little

Page 1 | 4

PARISH COUNCILLORS MEETING

October 25, 2017



higher than the cooling towers. The only recorded response from the meeting was from Stephen Greenwood who commented on the height of the wind turbines being the same. An outline, artist impression, of the plants was shown with the 120M high stacks included.

The gas connection is one element of the development that will impact locally, at least during its construction. Drax showed two diagrams of the preferred pipeline routes. It was acknowledged much of this crosses private land and the land owners need to be consulted and paid for the access across their land. Mention was made about landowners not being paid on time for other non-Drax works/projects. Drax acknowledged this confirming a land agent has been engaged and is already in dialogue with the land owners affected. Drax also said; hopefully land owners experience of Drax over many years demonstrates that this is not the way Drax like to treat our neighbours. A suggestion was made that if the landowners don't agree Grid can step in and use their powers to force the route. Drax responded saying they hope to continue to work with their neighbours as they have for many years and not get into any difficulty accessing the route.

Some further questions raised during the discussion included:

- Employment? Drax responded suggesting up to 1000 jobs both skilled and semi-skilled would be created during the construction phase.
 - Financing and cost to develop? Drax commented that this is still a very early stage in the project and the costs have not been finalised, therefore the financing of the projects was still subject to further work.
 - Knowledge of developing/operating gas plants? Drax commented that Dorothy the outgoing CEO had a strong background in developing gas projects. Also the business has recruited people in recent years who have these skills. It was also mentioned that the turbines are the major constituent of the projects and that Drax has considerable knowledge and skill in this area already within the business.
- The Investors position? Drax responded, our investors are aware of our interest in converting our coal units to gas. The generation capacity of the proposed CCGTs, if consented and built, would be larger than Hinkley Point C whilst the battery scheme would be the largest to be built anywhere in the world.

Drax presented the timeline they are currently hoping to follow through to the hopeful, DCO consent being given in 2019 before moving on to consider the EIA issues. It was reiterated by Drax the development being mainly in the existing plant area and therefore likely to have little impact. The gas pipeline will come across the fields and the need to conclude proper assessments along the routes was on-going. Drax stated that wherever possible civil engineering techniques such as directional drilling would be used to minimise environmental impact.

Drax outlined the expected scope of the EIA scope.

A comment was made about lighting the plant. Drax responded they had specifically called out lighting in the header on the slide. Acknowledging they had understood concerns in this regard with the ECO store development.

Page 2 | 4

PARISH COUNCILLORS MEETING

October 25, 2017



Generally, very supportive mood to the meeting which included positive comments about Drax and its positive forward looking management, looking out for the staff and local communities.

The meeting, when asked, confirmed no one had any objection to the proposals.

The provisional date of the next meeting was set for the evening of Wednesday 31 January.

Actions from meeting:

Action information	Responsible	Deadline	Completed date
A request was made for the presentation slides to be circulated. Accepting some redacting may be required first.	GB	Dec 2017	
Long Drax representative Roger Turnbull raised a question regarding a fence that needs to be erected on Drax land in the area of Carr lane. The request has been passed to Richard Thomas at Drax for action, Has the request been actioned?	GB Note: GB followed up with Richard who is waiting a price from Hargreaves. Richard will liaise directly with Roger on this work.	Dec 2017	Price has been received from fencing contractors, Richard in contact with parish council.
Camblesforth representative said some trees need cutting back close to the power lines again	GB Note: GB discussed this with Richard Thomas. He agreed to contact the Camblesforth Parish Council to look into this as it may not be Drax rather Northern Power Networks.	Dec 2017	The trees are the responsibility of Northern Power Network.
Roger flagged two footpaths, one close to the jetty and one on the Drax field that we intend to use for laydown/car parking during construction and CCS pad for the future	WSP GB comment:	Dec 2017	One of the paths is not a designated footpath.

Page 3 | 4

PARISH COUNCILLORS MEETING

October 25, 2017



thereafter. He has asked whether we intend to divert them temporarily or fence them during the works? He also wanted to ensure the field etc is put back after the works.	We probably need a landscape plan to include the areas raised		The detailed plans regarding the right of way have not been finalised as yet.
Jan Strelczenie (Hemingbrough) asked after an application he had made for landfill tax funding which appeared not to have been actioned.	Rachael Baldwin to contact Jan (Andrew Christian is responsible)	Nov 2017	Jane Breach has contacted Jan regarding the fund 16/1/18
MW agreed to distribute an e- version of the event poster.	MW	Nov 17	2 November 2017

32.2 Drax Parish Council Liaison Group Minutes (12 February 2018)



Minutes: Drax Parish Council Liaison Group

Details		Attendees
Date	12 February 2018	Karl Smyth – Drax (Chair)
Time	6:30pm	Darren Walker – Drax
		Jim Doyle – Drax
		Jane Breach – Drax
	Reception	Paul Taylor – Taylor Keogh Communications
	Conference Room	Jan Strelczenie – Hemingbrough Parish Council
	D, Drax Power	Roger Turnbull – Long Drax Parish Council
	Station	David Perry – Drax Parish Council
		Michelle Thorpe – Clerk to Long Drax and Newland Parish Councils
		Dave Peart – Selby District Councillor, Carlton and Camblesforth Parish Councils
		Stephen Greenwood – Newland Parish Council
		Neil Ball – Camblesforth Parish Council
		Ian Chilvers – Brayton Parish Council
		Kevin Wild – Camblesforth Parish Council
		John Barrett – Snaith & Cowick Town Council

Agenda items

No.	Item
1	Apologies No apologies received.
2	Review of previous minutes and actions arising The minutes of the previous meeting were approved. All actions from the previous meeting were either complete or in progress.
3	Update on Repower project Darren Walker and Jim Doyle presented an update of the Repower project and status of the consent procedure. The key points were: <ul style="list-style-type: none"> The initial non-statutory informal consultation has been completed with 126 attending, and 42 completed feedback forms. Responses are as follows 70% positive, 17% neutral, 7% adverse. The adverse feedback was mostly to do with localised issues and environmental impact. Drax is now in the formal statutory consultation phase with public exhibitions taking place in a variety of venues around the local community. The Preliminary Environmental Report (PEIR) has also been completed which highlights potential impacts and how they might be mitigated by the project team. This is submitted to various statutory bodies e.g. Natural England, Environment Agency and we are now awaiting responses from these agencies. The PEIR will eventually be incorporated in to the Environmental Statement submitted as part of the Development Consent Order (DCO) process.



- Drax is still evaluating the two potential pipeline routes, currently awaiting archaeology feedback on the gas routes. By the time the DCO is submitted in May, the decision on which route to use will have been made.
- Drax has been consulting and engaging with local landowners and land agents regarding site investigation works including surveys, geophysics and trial trenching.
- The outline of the site showed that majority of the construction will take place within the power station boundary. Drax are starting to define the red line boundary and hence reduce the associated impact.
- The contractor compound will be relocated to the south end cooling towers area. Drax intend to go submit a Town and Country Planning Application to Selby District Council rather than DCO for this part of the project.
- An illustrative fly-through of the project was shown to attendees. The project team highlighted that the gas pipeline had already been reconfigured to avoid Carr Lane. The gas compressor house location has been added.
- Transport options are road or river. However, the jetty has problems with the river being tidal and the river bed needs to be dredged up and down stream before use. The area is also being used by others and is designated protection of several wildlife species.
- Therefore, the preferred option is the A645 new road. Newland Bridge has been assessed and deemed fit for purpose regarding weight/load restrictions. Goole docks will be the preferred docks.
- The EIA reports on transportation impact and estimated peak car journeys to and from site. HGV's have rigid transport routes, down A645. Drax seeks to liaise closely with councillors to highlight any transport issues.
- The next stage for the project will be the submission of the DCO to the Planning Inspectorate in Q2 of this year. After an Examination phase, a recommendation would be made to the Secretary of State for Business, Energy and Industrial Strategy, who would likely take a decision in H2 2019.
- During the examination period interested parties can register and can participate in the examination. Local authorities issue a local impact report which goes to the Inspectorate and is included in the examination. The Drax project team suggested any interested parties look at similar exercises that have taken place on other DCO projects via the Planning Inspectorate website: <https://infrastructure.planninginspectorate.gov.uk/>.

The following questions were tabled by attendees:

1. *Why was Junction Goole used as one of the venues and not Snaith or Rawcliffe?*
KS responded that Junction had been chosen based on venues used during the Repower project and discussion with the Local Authorities. It has historically had a high footfall during previous consultation events. KS offered to liaise with the respective Parish Councils to check whether they would benefit from a presentation by the project team direct.
ACTION: Drax to liaise with Rawcliffe Parish Council / Snaith & Cowick Town Council over potential joint presentation on Repower.
2. *Are there any plans to further reinforce the right hand turn at the end of South entrance road?*
DW confirmed that there are currently no plans to do this and that same entrance had previously been used by sub-contractors during the dome construction without any incidents.



	<p>3. <i>How many additional contractors were anticipated and what would be the impact on local bed & breakfast accommodation?</i> DW estimated that there would be around 850 additional contractors working on the project. DW noted that several thousand contractors typically work on site at the station during a major outage.</p> <p>4. <i>What will the profile of the above ground installation at the national gas pipeline connection?</i> Feeder 1 already has connection in place, it would only need to be installed on the yellow route if it is chosen. The installation measures 35m (w) x 35m (l) x 2.5m (h).</p> <p>5. <i>What type of battery technology will be used?</i> DW confirmed no decision will be taken on the technology choice until nearer to the time – this is due to rapid innovation in the battery storage and commercial considerations.</p> <p>6. <i>What is the environmental efficiency of the gas turbines?</i> JD confirmed that all emissions from the turbines will be tightly regulated by the Environment Agency, as is current practice with the existing coal units. JD noted that gas technology typically has lower emissions than coal.</p> <p>7. <i>Is a Section 106 required as part of the planning consent?</i> JD confirmed that given the development largely takes place within the power station's existing footprint, Drax is of the view that a S106 is not required and Selby District Council has shared this view to date.</p> <p>8. <i>Is Newland Bridge equipped to accommodate the associated construction traffic?</i> JD confirmed that Drax's transport consultants have liaised with North Yorkshire County Council regarding weight loading and distribution on the bridge. JD added that the bridge has recently had reinforcement work done to it.</p> <p>During the discussion on the Repower project, RT requested that the STOP markings at the materials handling gatehouse road are repainted to enhance visibility.</p> <p>ACTION: Drax to schedule in repaint work for STOP markings.</p> <p>Finally, SG highlighted that Newland Parish Council owns land within the red line boundary but has not been consulted with. The land was not registered on the Land Registry. JD noted that notifications had been posted in the area requesting owners of unregistered land to get in touch. JD confirmed that Drax would follow-up after the meeting with NPC direct.</p> <p>ACTION: Drax to follow-up with Newland Parish Council on unregistered land within DCO red line boundary.</p>
4	<p>AOB</p> <p>SG noted that he had read about the operational incident that took place at the power station in December from a third-party source and did not receive any direct communication from Drax. He queried why no information was cascaded and what happens to the biomass supply chain when there is an operational issue at the power station.</p>



	<p>3. <i>How many additional contractors were anticipated and what would be the impact on local bed & breakfast accommodation?</i> DW estimated that there would be around 850 additional contractors working on the project. DW noted that several thousand contractors typically work on site at the station during a major outage.</p> <p>4. <i>What will the profile of the above ground installation at the national gas pipeline connection?</i> Feeder 1 already has connection in place, it would only need to be installed on the yellow route if it is chosen. The installation measures 35m (w) x 35m (l) x 2.5m (h).</p> <p>5. <i>What type of battery technology will be used?</i> DW confirmed no decision will be taken on the technology choice until nearer to the time – this is due to rapid innovation in the battery storage and commercial considerations.</p> <p>6. <i>What is the environmental efficiency of the gas turbines?</i> JD confirmed that all emissions from the turbines will be tightly regulated by the Environment Agency, as is current practice with the existing coal units. JD noted that gas technology typically has lower emissions than coal.</p> <p>7. <i>Is a Section 106 required as part of the planning consent?</i> JD confirmed that given the development largely takes place within the power station's existing footprint, Drax is of the view that a S106 is not required and Selby District Council has shared this view to date.</p> <p>8. <i>Is Newland Bridge equipped to accommodate the associated construction traffic?</i> JD confirmed that Drax's transport consultants have liaised with North Yorkshire County Council regarding weight loading and distribution on the bridge. JD added that the bridge has recently had reinforcement work done to it.</p> <p>During the discussion on the Repower project, RT requested that the STOP markings at the materials handling gatehouse road are repainted to enhance visibility.</p> <p>ACTION: Drax to schedule in repaint work for STOP markings.</p> <p>Finally, SG highlighted that Newland Parish Council owns land within the red line boundary but has not been consulted with. The land was not registered on the Land Registry. JD noted that notifications had been posted in the area requesting owners of unregistered land to get in touch. JD confirmed that Drax would follow-up after the meeting with NPC direct.</p> <p>ACTION: Drax to follow-up with Newland Parish Council on unregistered land within DCO red line boundary.</p>
4	<p>AOB</p> <p>SG noted that he had read about the operational incident that took place at the power station in December from a third-party source and did not receive any direct communication from Drax. He queried why no information was cascaded and what happens to the biomass supply chain when there is an operational issue at the power station.</p>



KS confirmed that some damage had been sustained by the biomass delivery system in December as a result of a small localised fire, which was quickly brought under control. No-one was injured by the event and the safety of employees was the company's foremost priority. The incident posed no risk to the local community however KS committed to take that feedback on communications on board in the future. As a result of the incident, Drax decided to restrict biomass deliveries to the power station, which involved the logistics team utilising storage options off site including at a number of ports.

32.3 Invitations to political, environmental, economic and community stakeholder groups and organisations (8 January 2018)

From: Paul Taylor

Sent: 08 January 2018 17:34

Subject: Letter from Drax Power Chief Executive re: proposal for new power generation & battery storage / statutory consultation period



Proposal for new power generation

PERIOD OF STATUTORY CONSULTATION

PROPOSED REPOWER OF UP TO TWO COAL FIRED UNITS TO GAS TOGETHER WITH BATTERY STORAGE AT DRAX POWER STATION

I write in relation to our proposals for the Drax Repower Project that were announced last year, and specifically with regard to the forthcoming period of statutory public consultation that starts on January 16th and ends on February 27th 2018.

Our proposals comprise the repowering of up to two of the existing generating units at Drax Power Station from coal-fired to gas, with battery storage capability. The proposed new gas units would connect to the existing 400kV National Grid substation within the existing Drax Power Station complex. A new gas pipeline would provide fuel for the new generating units from the national gas transmission system. The Repower project requires the approval of the Secretary of State for Business, Energy & Industrial Strategy.

Over recent months, our project team has undertaken a series of environmental and engineering studies that will inform the application for a Development Consent Order

Over recent months, our project team has undertaken a series of environmental and engineering studies that will inform the application for a Development Consent Order (DCO) that needs to be submitted to the Secretary of State (we expect to submit the application in the second quarter of this year). As part of our preliminary assessment work, we have consulted Selby District Council, North Yorkshire County Council and East Riding of Yorkshire Council, as well as local landowners and a range of other organisations. In October/November 2017, we shared our outline plans with local communities in the vicinity of Drax – via a leaflet to homes and businesses, exhibitions, social media, reports in the local media and advertisements.

Before we finalise our plans and submit our application, we are inviting local people, local councils, local landowners and other interested parties to give their views on the project during a prescribed period of statutory consultation (January 16th to February 27th 2018).

In recent days, local homes and businesses within three kilometres of Drax have received the attached leaflet, giving additional information on our plans, details of the exhibitions (five to be held – see below) and the location of places where they can access the information if they are unable to visit one of the exhibitions. Information about the project, including the Preliminary Environmental Information Report (PEIR) and our Statement of Community Consultation, can also be accessed via our dedicated website <http://repower.drax.com>, which also has an online feedback form.

On January 2nd, the Yorkshire Post published an abbreviated version of our Statement of Community Consultation. Over the next 7-10 days, we will advertise details of the exhibitions and the statutory period of consultation in the local and national press and via social media, we will directly inform local journalists, we will display posters in the local area and we will contact a range of local groups and organisations.

Selby District Council, North Yorkshire County Council and East Riding of Yorkshire Council, as well as nine parish councils in the area, local landowners and other parties that have a statutory interest will shortly receive a copy of the PEIR, a non-technical summary of the PEIR and the leaflet.

Public exhibitions will be held at:

- Selby Town Hall, York St, Selby, YO8 4AJ. Saturday 20th January 2018 from 10am until 4pm.
- Drax Sports & Social Club, Main Road, Drax, YO8 8PJ. Tuesday 23rd January 2018 from 3pm until 8pm.
- Junction, 2 Paradise Place, Goole, DN14 5DL. Wednesday 24th January 2018 from 2pm until 7pm.
- Selby Town Hall, York Street, Selby, YO8 4AJ. Thursday 1st February 2018 from 10am until 4pm.
- Hemingbrough Methodist Church Hall, 2 Main Street, Hemingbrough, Selby YO8 6QE. Friday, 2nd February 2018 from 9.30am until 1.30pm.

Please note that as well as information on our proposed project, the exhibitions will provide the opportunity to discuss and understand the DCO process, including how organisations and individuals may register their views and opinions throughout the decision-making process post submission of the application. We hope therefore you will be able to join us at one of the events. In the meantime if you would like to know more about any aspect of the Repower Project, please contact us via draxrepower@drax.com or call us on 0800 731 8250.

Yours sincerely,


Andrew Koss,
CEO, Drax Power

32.4 Invitations to political, environmental, economic and community stakeholder groups and organisations (7 February 2018)

From: Paul Taylor
Sent: 07 February 2018 11:26
Subject: Drax Repower Project: Information Update 7th February



INFORMATION UPDATE, February 7th 2018

PUBLIC EXHIBITIONS ABOUT DRAX REPOWER HELD, CONSULTATION PERIOD REMAINS OPEN UNTIL 27th FEBRUARY

The final public exhibitions about the Drax Repower project were held last week in Selby and Hemingbrough but people still have until 27th February to consider the project's Preliminary Environmental Information Report (PEIR) and share their feedback with Drax.

Over the past fortnight, five exhibitions have been held in the local area. The project team has also recently met Selby District councillors and representatives of the parish councils that are local to Drax Power Station.

The public exhibitions explained the main elements of the Repower project, the need for it to be built, the main points from the PEIR and the various studies that Drax and its project team has undertaken over recent months. The exhibitions also showed visitors what the Repower project could look like from different viewpoints, including two possible routes for the c. 3km underground pipeline that would connect the power station to the national gas grid. 135 people visited the exhibitions and spoke with members of the project team.

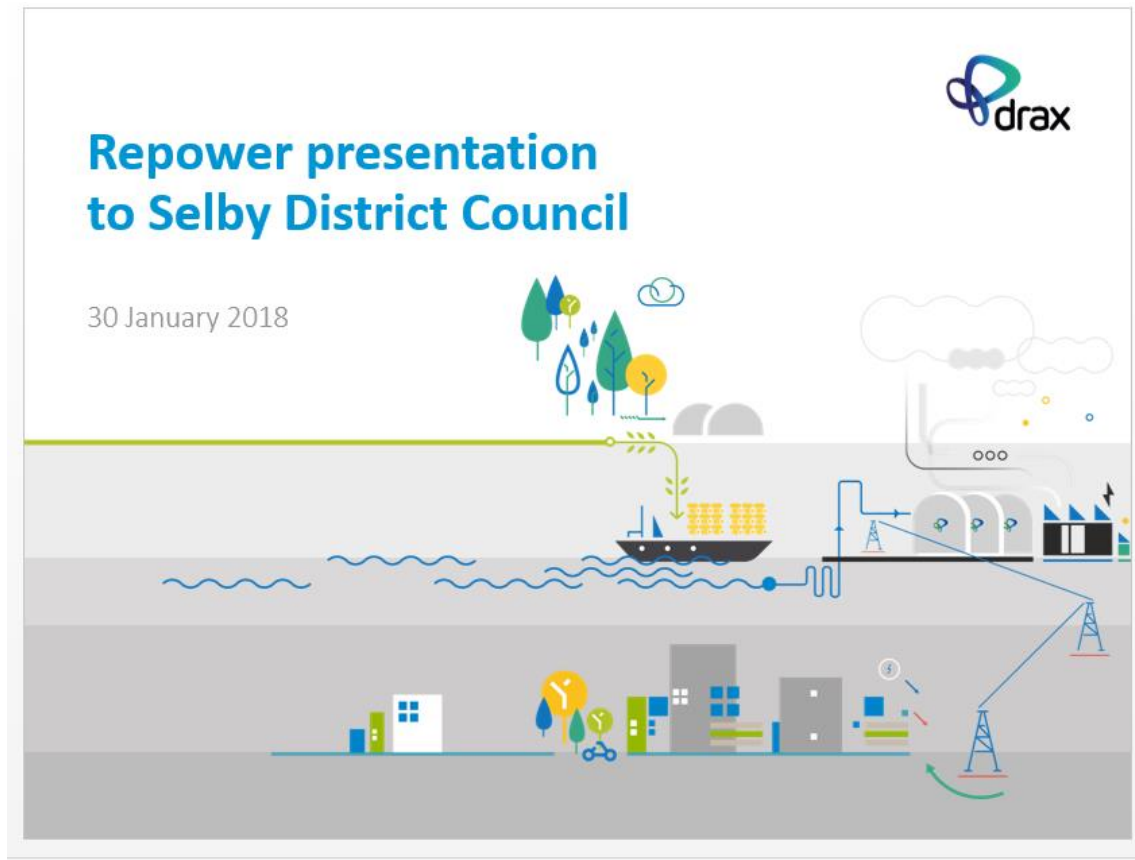
The exhibition boards can now be viewed on the project website (<http://repower.drax.com>), alongside a leaflet about the project, the PEIR, a Project Overview document and the project's Statement of Community Consultation. The suite of documents can also be viewed at Access Selby, County Hall in Northallerton and East Riding of Yorkshire's Customer Service Centre in Beverley. The libraries in Selby, Snaith and Goole also host these documents.

Gathering local feedback to the Repower project is an important part of the planning process, and people have until 5.00pm on February 27th to provide their feedback. They can do this via the project website, by email to DraxRepower@drax.com or by writing to us at FREEPOST DRAX REPOWER.

Whilst the statutory period of consultation remains open till the end of this month, the project team is continuing its engineering and environmental studies. The team will also consider the feedback that it receives from local people, local councils and various other organisations. The feedback will help inform the final designs of the project.

Currently, Drax is aiming to finalise and submit its application to the Secretary of State for Business, Energy & Industrial Strategy within the next 3-4 months. A final decision from the Secretary of State, after an independent examination period, could be expected in the second half of 2019. Drax will issue further Information Updates as the project moves forward.

32.5 Presentation made a meeting with Selby District Council (30 January 2018)



What is the Repower project?

AK

Drax is seeking planning permission to modify up to two of its remaining coal units to gas

It proposes to do this by developing:

- Up to two new **gas-fired generating units**, each with a capacity roughly x3 the size of an existing coal unit (1,800MW vs. 645MW). The total capacity of two units would be 3,600MW.
- Up to two new **battery storage facilities** (one per generating unit and each up to 100MW capacity).
- A new **gas pipeline** around 3km in length connecting to the National Gas Transmission System.

In addition, the project would include:

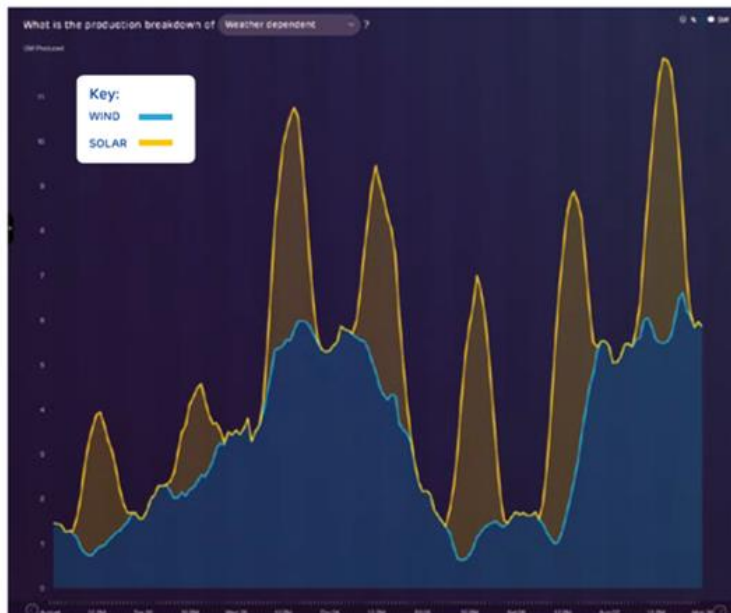
- An electrical connection into Drax's existing 400 kilovolt substation that would allow electricity to be exported into the National Grid.
- An option to utilise the existing jetty on the River Ouse, subject to some additional development, although this is not our preferred transport option.
- Land set aside for potential carbon capture technology in the future and a pedestrian footbridge over New Road to the power station for contractors..

Why Repower?

AK

The challenge: responding to a changing energy system

- More wind and solar power increases the **need for flexible generation** to balance and support the national electricity grid.
- High carbon but flexible coal power stations **will be taken off the grid by October 2025** in line with UK Government policy.



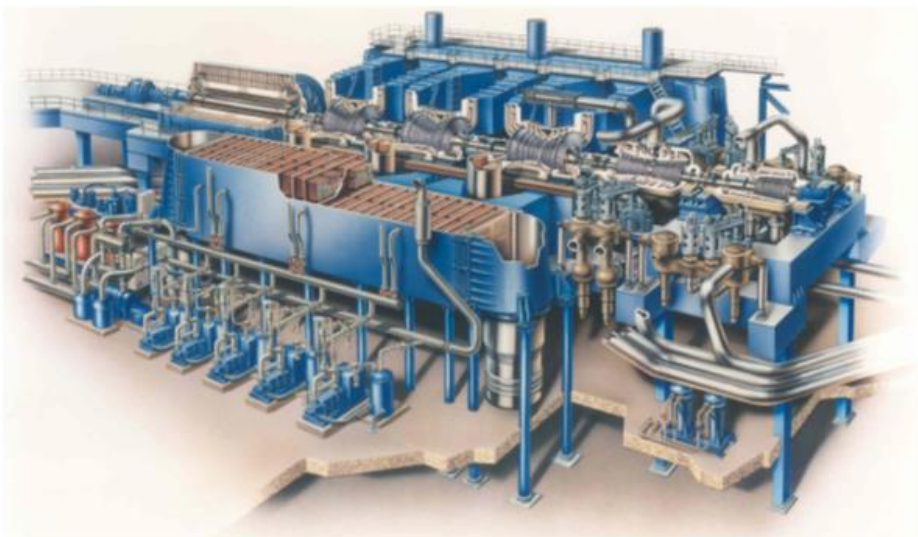
National wind and solar output 1 – 8 August 2016, source: www.electricinsights.co.uk

Why Repower?

AK

Finding an engineering solution

Integrating new technology into the existing infrastructure at Drax



to **extend the life of Drax Power Station** into the 2030s and beyond.

AK

Why Repower?

Benefits

New operating regime

- Faster starting
- Faster loading
- More flexible

Extending the life of Drax Power Station

- A coal to gas upgrade would enable Drax to generate into the 2030s.
- This would help to secure jobs and supply chain in Selby and wider region.

Re-using existing infrastructure

- Significant cost savings achieved compared to equivalent new build plant.

| 5 |

AK

The planning regime

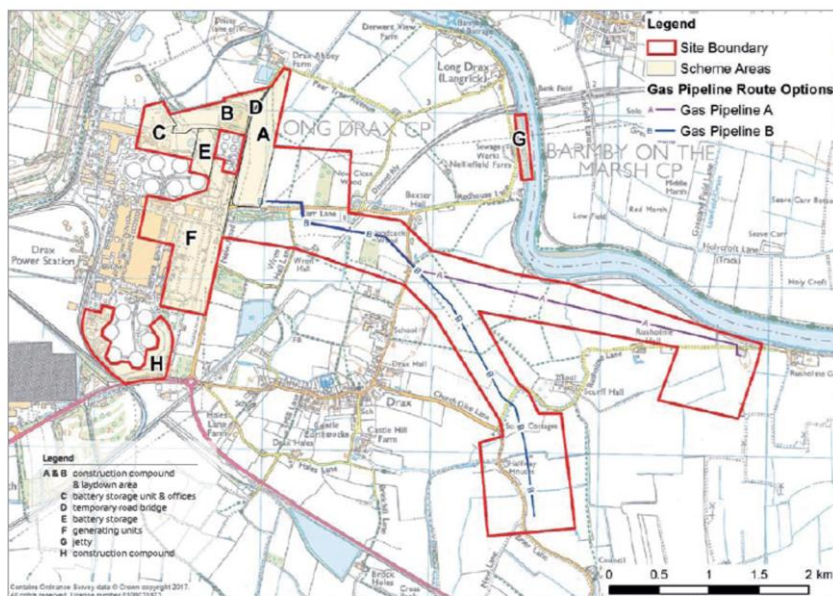
Repower is designated a Nationally Significant Infrastructure Project

- Our application for a Development Consent Order will be submitted to the Secretary of State for Business, Energy and Industrial Strategy.
- The Planning Inspectorate will appoint an Examining Authority to consider the application and make a recommendation to the SoS.
- **Selby District Council is a statutory consultee in this process.** We have already agreed a Planning Performance Agreement with SDC and North Yorkshire County Council. Both authorities have been working very closely on this project, which we welcome.
- We are working to a tight planning programme. Our objective is to secure a Development Consent Order in time to submit the project into the 2019 T-4 Capacity Market auction (likely to take place winter 2019).
- The earliest the project would start generating electricity is 2022/23.

| 6 |

Indicative site layout and gas pipeline options

DW



Illustrative model

DW



Environmental Impact Assessment

OB

As part of the planning process, we will be undertaking an Environmental Impact Assessment (EIA).

The EIA will consider the potential impact of the Repower Project on a range of environmental topics, including:

- Air quality
- Noise and vibration
- Historic environment
- Biodiversity
- Landscape and visual
- Ground conditions and contamination
- Water resource, quality and hydrology
- Waste
- Socioeconomics
- Cumulative impact with other projects in the area

The work completed to date is set out in a Preliminary Environmental Impact Report, available at public events, online and at designated viewing locations.

|⁹ |

Transport

OB

Drax's preferred option is to bring construction material to site by road.

- Jetty on the River Ouse remains an option but scope is limited.
- Three year construction period for each unit.
- Construction workers would utilise existing road network and access entrances to Drax.
- Access for construction of new gas pipeline would also be from New Road.

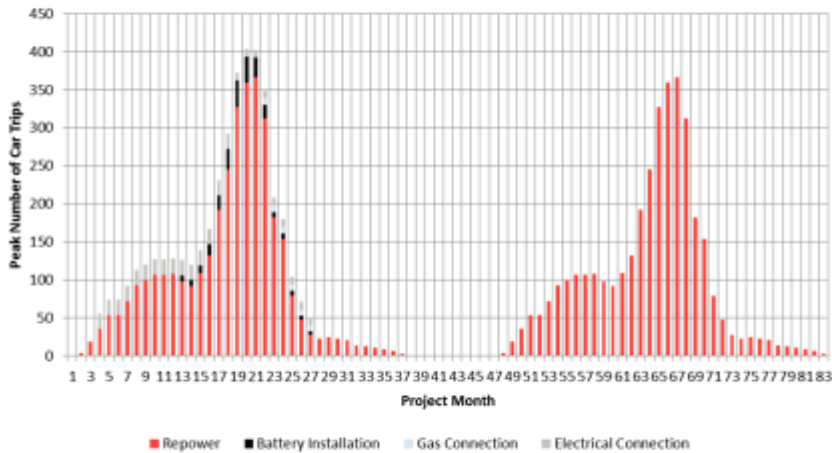


|¹⁰ |

Transport

OB

Trip profile during construction

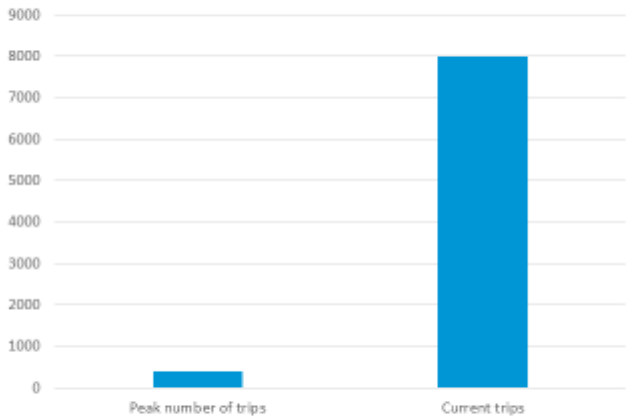


| 11 |

Transport

OB

Peak number of trips vs. current trips on network



Number of trips during peak months of Repower construction will be an increase of less than 5% on current trips on the network.

| 12 |

Engagement to date

KS

Autumn/Winter 2017

- Pre-application engagement with SDC officers
- Non-statutory (informal) stage of consultation, 8 – 30 November
- Leaflet distribution to households and businesses within 3km 'consultation zone'
 - 126 people attended four public exhibitions
 - 42 completed comment forms received: 70% positive; 17% neutral; 7% opposed

Spring 2018

- Statutory (formal) stage of consultation: 16 January – 27 February
- Consultation on the Preliminary Environmental Information Report (PEIR)
- Five public exhibitions:
 - **Selby Town Hall**, 20 January 2018 (10am – 4pm)
 - **Drax Sports and Social Club**, 23rd January 2018 (3pm – 8pm)
 - **Junction, Goole**, 24 January 2018 (2pm – 7pm)
 - **Selby Town Hall**, 1 February (10am – 4pm)
 - **Hemingbrough Methodist Church Hall**, 2 February (9.30am – 1.30pm)

13

Programme and next steps

AK



14

Questions?

| 15 |

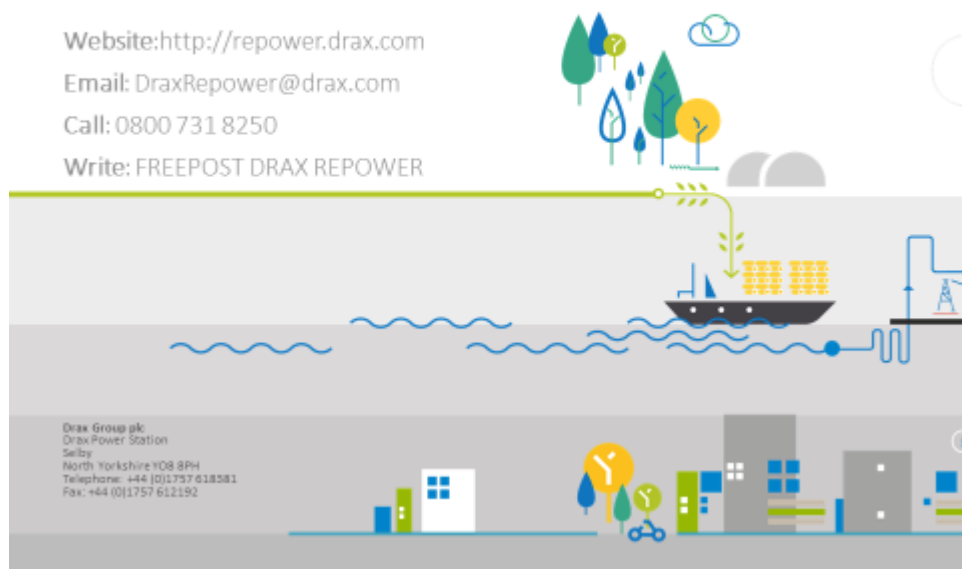
Thank you

Website: <http://repower.drax.com>

Email: DraxRepower@drax.com

Call: 0800 731 8250

Write: FREEPOST DRAX REPOWER



Drax Group plc
Drax Power Station
Skelton
North Yorkshire YO8 8PH
Telephone: +44 (0)1757 618581
Fax: +44 (0)1757 612192